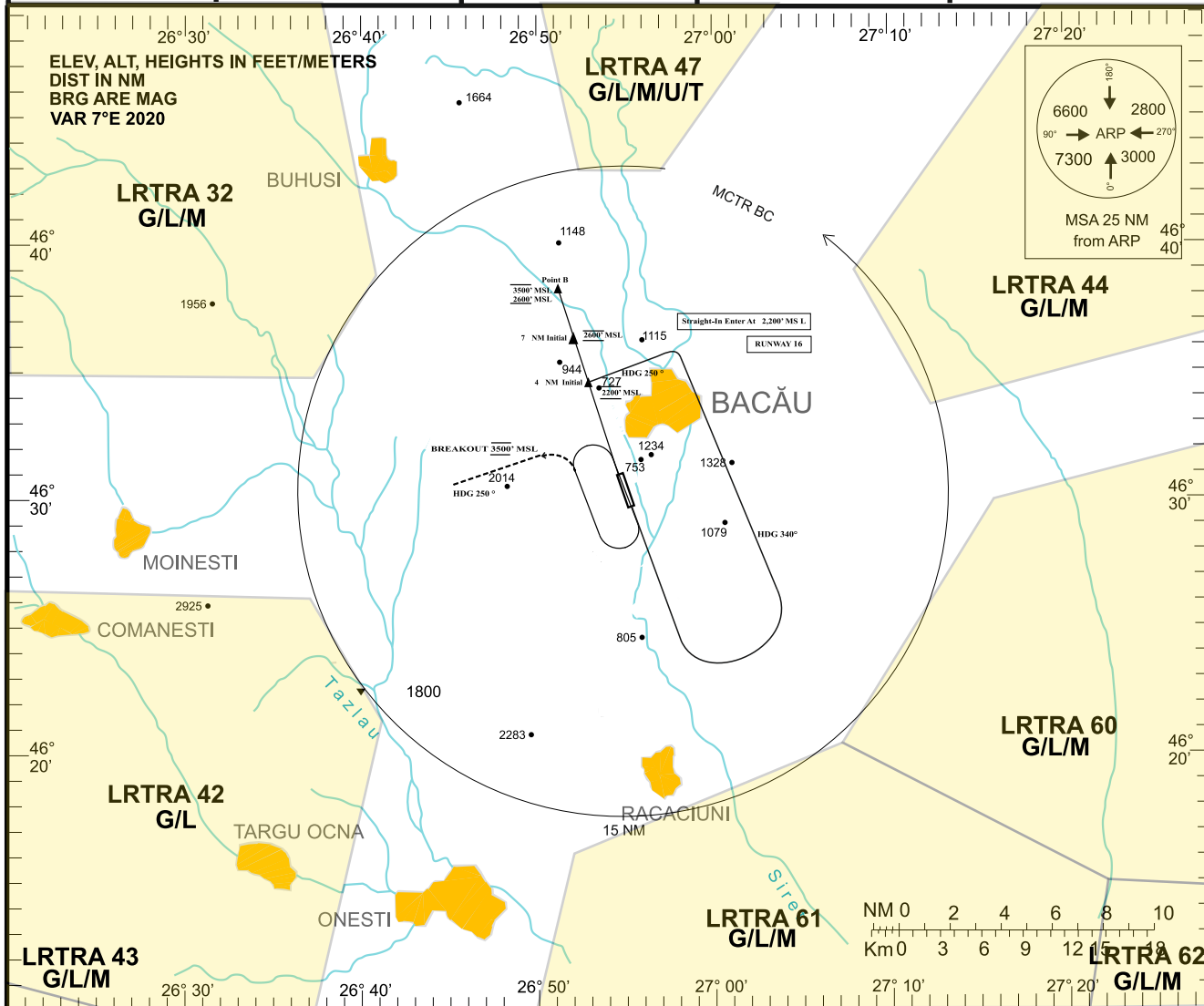


**VISUAL APPROACH CHART**

**AERODROME ELEV. 608 ft  
HEIGHTS RELATED TO  
THR RWY / ELEV 608 ft.**

**BACĂU-Bacău(LRBC)  
VFR/CLOSED TRAFFIC PATTERN  
RWY 16**

<b>MAPP</b> 124.750(P)/282.675(A)	<b>MTWR</b> 131.400(P)/122.100(A)	<b>GND</b> 133.700(P)/122.100(A)		
<b>PAR</b> 124.750(P)/123.300(A)	<b>APP COURSE</b> 158	<b>NDB</b> BC 426 B 520 BMN 345 BM364	<b>TDZE</b> 607 ft	<b>LDA</b> 8200 ft



In case of missed approach climb at 1700' MSL on heading 160 and contact AGAT APP  
 In case of radio failure squawk 7600.  
 Enter initial via the appropriate VFR entry point.  
 Fly initial at the published altitude.  
 Rock wings on initial.  
 Break at normal break point, if inside downwind is clear.  
 Flash landing light on final and watch for light signals on final.